

# Sofosbuvir/Velpatasvir for 12 Weeks in Patients Coinfected With HCV and HIV-1: The ASTRAL-5 Study

**Norbert Bräu<sup>1,2</sup>, David Wyles<sup>3</sup>, Shyam Kottlil<sup>4</sup>, Eric Daar<sup>5</sup>, Kimberly Workowski<sup>6</sup>, Annie Luetkemeyer<sup>7</sup>, Oluwatoyin Adeyemi<sup>8</sup>, Peter Ruane<sup>9</sup>, Tom McClean<sup>10</sup>, Matt Guion<sup>10</sup>, Brian Doehle<sup>10</sup>, K.C. Huang<sup>10</sup>, Anu Osinusi<sup>10</sup>, John McNally<sup>10</sup>, Diana M. Brainard<sup>10</sup>, John G. McHutchison<sup>10</sup>, Susanna Naggie<sup>11</sup>, Mark Sulkowski<sup>12</sup>**

<sup>1</sup>James J. Peters Veteran Affairs Medical Center, Bronx, New York, USA; <sup>2</sup>Icahn School of Medicine at Mount Sinai, New York, New York, USA; <sup>3</sup>Division of Infectious Diseases, University of California, San Diego, California, USA; <sup>4</sup>Institute of Human Virology, University of Maryland, Baltimore, Maryland, USA; <sup>5</sup>David Geffen School of Medicine, University of California, Los Angeles, California, USA; <sup>6</sup>Emory University, Atlanta, Georgia, USA; <sup>7</sup>University of California, San Francisco, California, USA; <sup>8</sup>Rush University Medical Center, Chicago, Illinois, USA; <sup>9</sup>Ruane Medical and Liver Health Institute, Los Angeles, California, USA; <sup>10</sup>Gilead Sciences, Inc., Foster City, California, USA; <sup>11</sup>Duke University, Durham, North Carolina, USA; <sup>12</sup>Johns Hopkins University School of Medicine, Baltimore, Maryland, USA



#AIDS2016 | @AIDS\_conference



# Disclosures

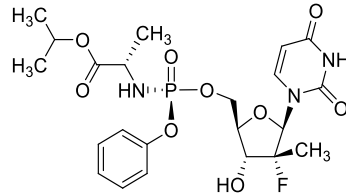
**Research Grants: AbbVie, BMS, Gilead**

**Advisory Boards: AbbVie, BMS, Gilead, Merck**

**Speaker Bureau: AbbVie, BMS, Gilead, Merck**

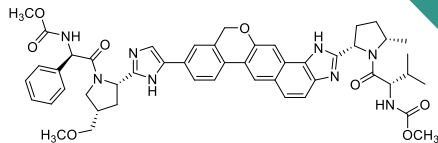
# Background

**SOF**  
Nucleotide  
polymerase  
inhibitor



## ◆ Sofosbuvir (SOF)<sup>1,2</sup>

- Potent antiviral activity against HCV GT 1–6
- Once-daily, oral, 400-mg tablet



**VEL**  
NS5A  
inhibitor

## ◆ Velpatasvir (VEL; GS-5816)<sup>3</sup>

- Picomolar potency against GT 1–6
- 2<sup>nd</sup>-generation inhibitor with improved resistance profile

**SOF**

**VEL**

## ◆ SOF/VEL FDC<sup>4-6</sup>

- Once daily, oral, FDC (400/100 mg)
- Treatment with SOF/VEL for 12 weeks in Phase 3 studies resulted in high SVR in patients with HCV GT 1–6

FDC, fixed-dose combination.

1. Jacobson IM, et al. N Engl J Med 2013;368:1867-77; 2. Lawitz E, et al. N Engl J Med 2013;368:1878-87; 3. Lawitz E, et al. J Vir Hep 2015;22:1011-9; 4. Feld J, et al. New Engl J Med 2015;373:2599-607; 5. Foster G, et al. New Engl J Med 2015;373:2608-17; 6. Curry M, et al. New Engl J Med 2015;373:2618-28.

# Background and Aim

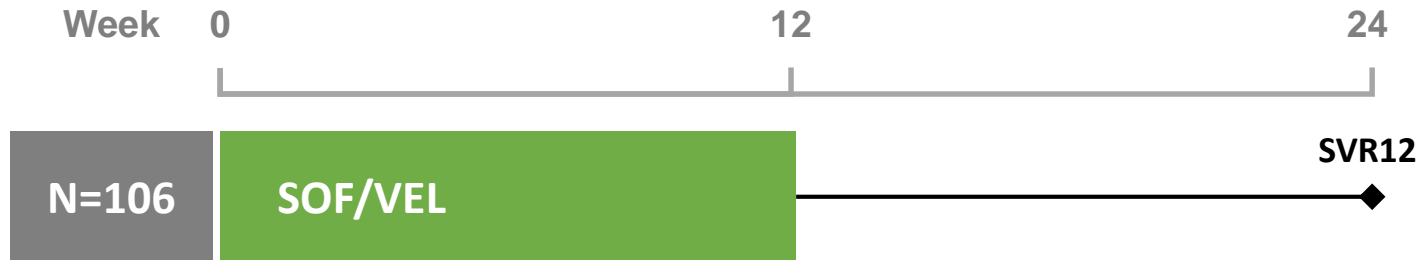
- Liver-related disease remains a major cause of morbidity and mortality in patients coinfecting with HCV and HIV-1<sup>1</sup>
  - Accelerated progression of liver disease
  - Higher rates of cirrhosis, end-stage liver disease, and hepatocellular cancer
- Direct-acting antiviral (DAA) therapy that is effective across all HCV genotypes with limited drug-drug interactions with antiretroviral therapy (ART) is needed
- This Phase 3 study aimed to evaluate safety and efficacy of SOF/VEL in patients coinfecting with HCV and HIV-1

1. Weber R, et al. Arch Intern Med 2006;166:1632-1641.



# Study Design

## ASTRAL-5 HIV/HCV Coinfection Study



- Open-label, single-arm, multicenter, Phase 3 study
- Broad inclusion criteria
  - HCV genotypes 1–6
  - Treatment naïve or experienced
  - 30% with compensated cirrhosis
  - On stable ART for  $\geq 8$  weeks, CD4 cell count  $\geq 100$  cells/mm<sup>3</sup>, and HIV RNA  $\leq 50$  copies/mL
- Inclusion of non-nucleoside reverse-transcriptase inhibitor (NNRTI), integrase inhibitor, and protease inhibitor (PI) regimens with TDF/FTC or ABC/3TC

3TC, lamivudine; ABC, abacavir; FTC, emtricitabine; TDF, tenofovir disoproxil fumarate.

# Study Endpoints

## ASTRAL-5 HIV/HCV Coinfection Study

- Primary endpoint: SVR12
  - HCV RNA <LLOQ at post-treatment Week 12
    - COBAS AmpliPrep/COBAS TaqMan HCV Quantitative Test, v2.0; LLOQ=15 IU/mL
- Safety
  - Adverse events and discontinuations
  - Maintenance of HIV-1 RNA <50 copies/mL
  - Laboratory abnormalities
  - Changes in renal function

# Demographics and Baseline Characteristics

## ASTRAL-5 HIV/HCV Coinfection Study

	SOF/VEL n=106
Mean age, y (range)	54 (25–72)
Male, n (%)	91 (86)
Black, n (%)	48 (45)
Mean BMI, kg/m <sup>2</sup> (range)	27 (19–43)
Cirrhosis, n (%)	19 (18)
Treatment experienced,* n (%)	31 (29)
IL28B CC, n (%)	24 (23)
Mean HCV RNA, log <sub>10</sub> IU/mL (range)	6.3 (5.0–7.4)
HCV genotype	
1a / 1b	66 (62) / 12 (11)
2	11 (10)
3	12 (11)
4	5 (5)

\*Includes PEG + RBV failures and PI + PEG + RBV failures.

# HIV Baseline Characteristics

## ASTRAL-5 HIV/HCV Coinfection Study

	SOF/VEL n=106
Mean CD4 count, cells/ $\mu$ L (range)	598 (183–1513)
NRTI backbone	
TDF-based with boosted agent (RTV or COBI)	56 (53)
TDF-based without boosted agent	35 (33)
ABC/3TC-base	15 (14)
ART use at baseline	
PI (DRV, LPV or ATV)	50 (47)
NNRTI (RPV)	13 (12)
Integrase inhibitor (RAL or EVG)	36 (34)
Other (>1 of the above classes)	7 (7)

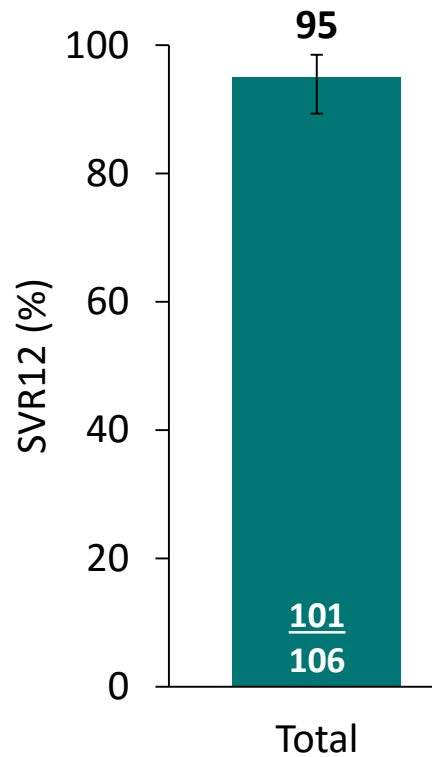
NRTI, nucleoside-analog reverse-transcriptase inhibitor; NNRTI, non-nucleoside analog reverse-transcriptase inhibitor; 3TC, lamivudine; ABC, abacavir; ATV, atazanavir; COBI, cobicistat; DRV, darunavir; EVG, elvitegravir; LPV, lopinavir; RAL, raltegravir; RPV, rilpivirine; RTV, ritonavir.





# Results: SVR12 by Genotype

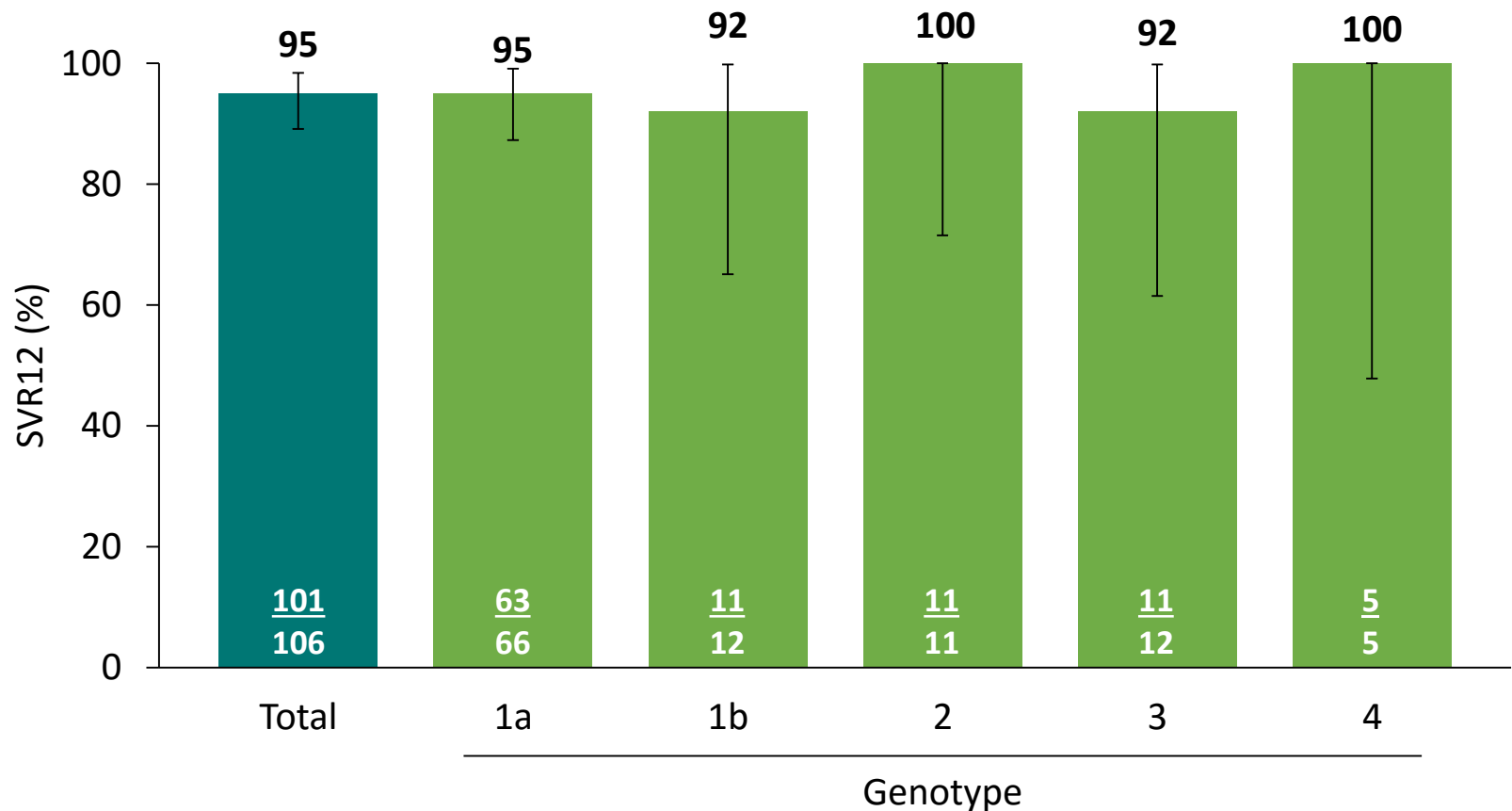
## ASTRAL-5 HIV/HCV Coinfection Study



Error bars represent 95% confidence intervals.

# Results: SVR12 by Genotype

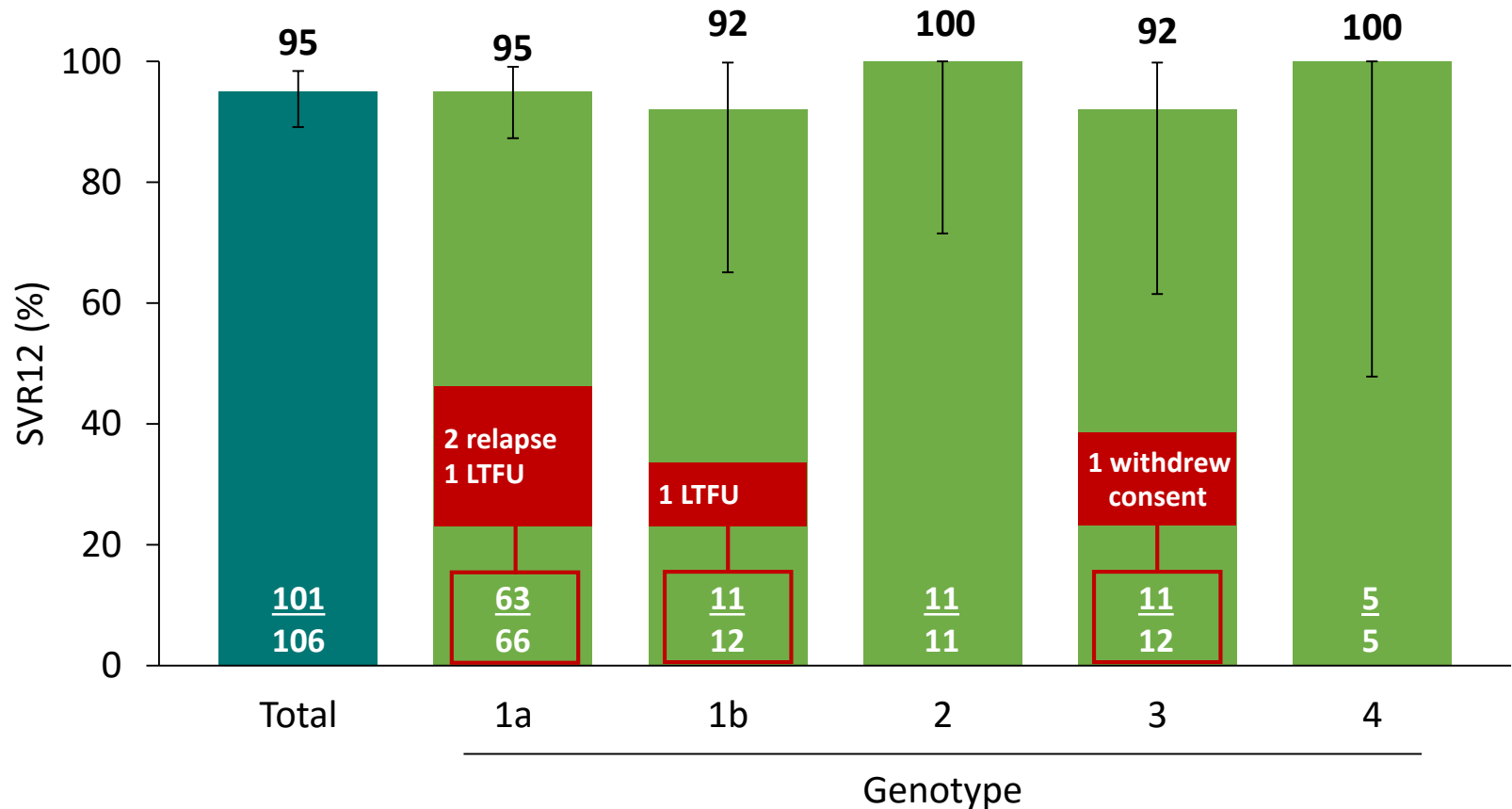
## ASTRAL-5 HIV/HCV Coinfection Study



LTFU, lost to follow-up. Error bars represent 95% confidence intervals.

# Results: SVR12 by Genotype

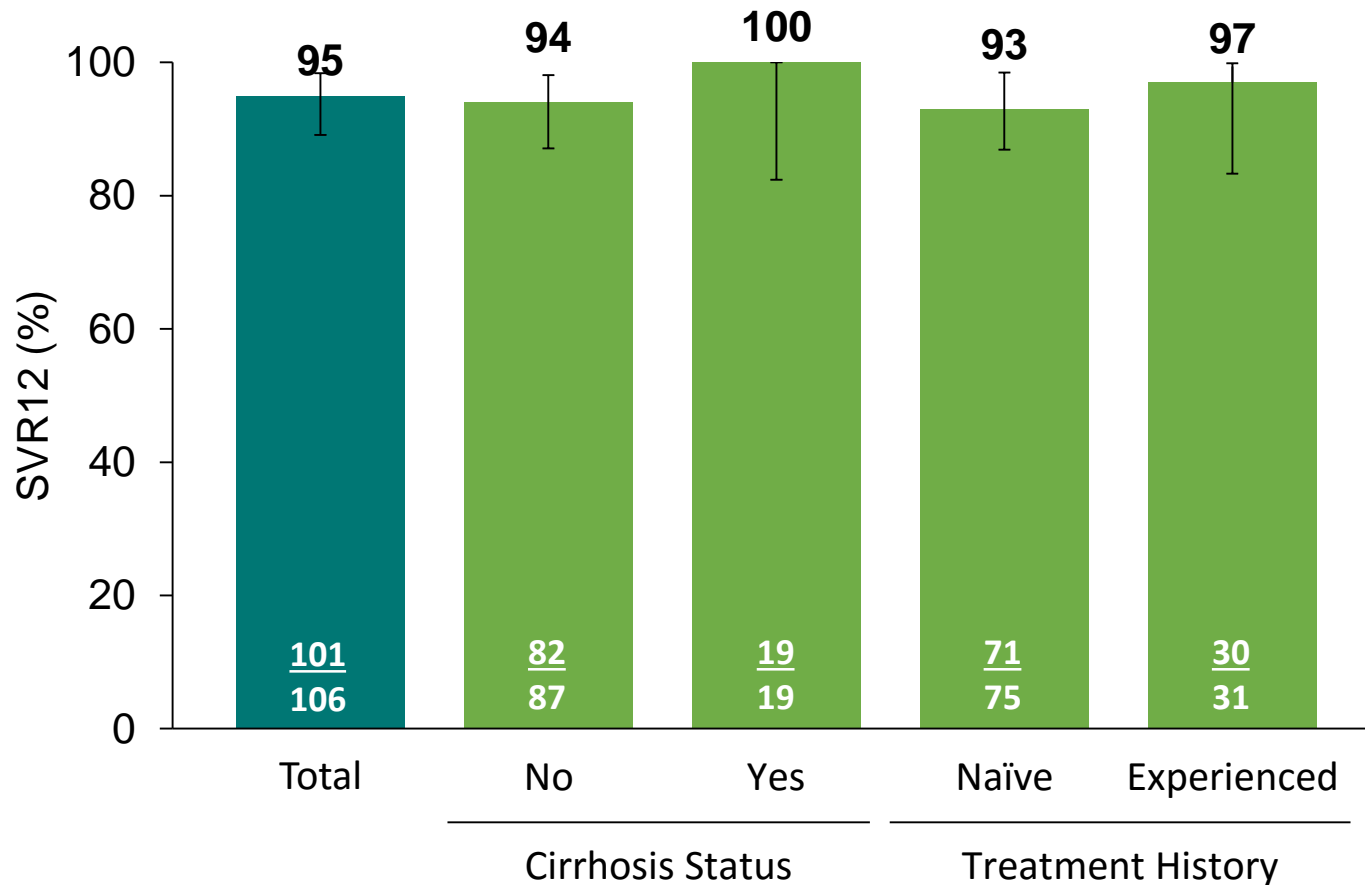
## ASTRAL-5 HIV/HCV Coinfection Study



LTFU, lost to follow-up. Error bars represent 95% confidence intervals.

# Results: SVR 12 by Cirrhosis or Prior Treatment

## ASTRAL-5 HIV/HCV Coinfection Study

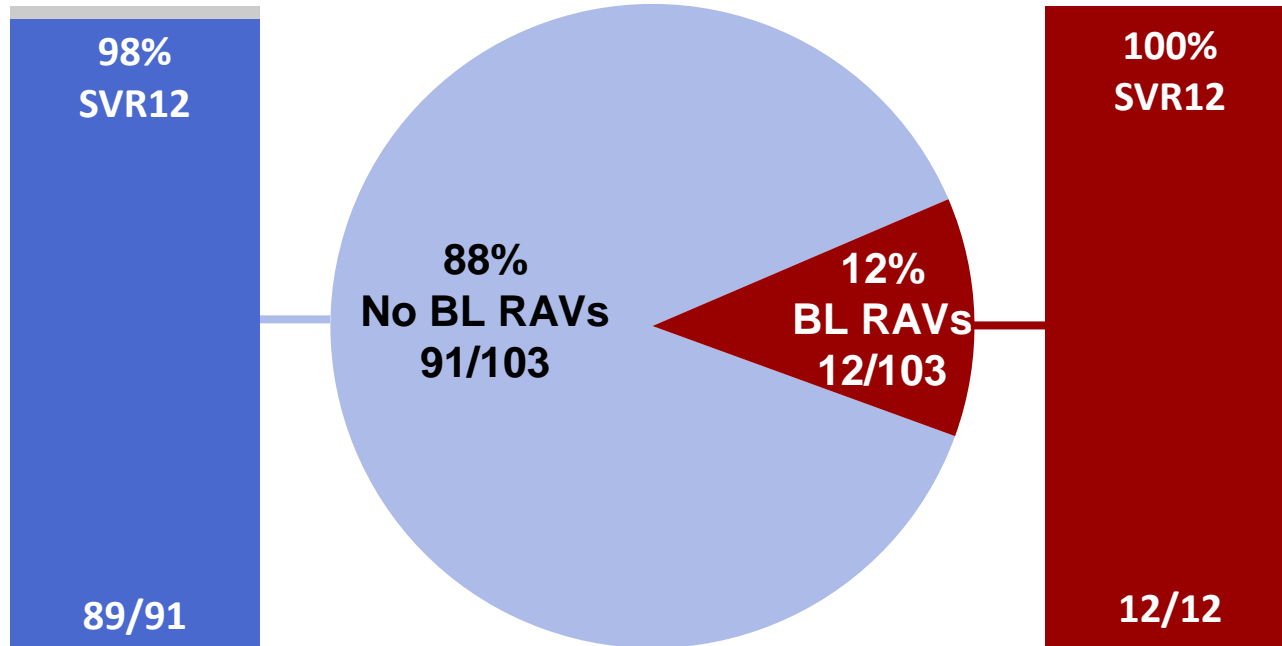


LTFU, lost to follow-up. Error bars represent 95% confidence intervals.

# Results: SVR12 by Baseline NS5A RAVs

## ASTRAL-5 HIV/HCV Coinfection Study

Total, N=103



All patients with NS5A Class RAVs achieved SVR

15% cutoff: 12/12 patients

1% cutoff: 19/19 patients

NS5A class RAVs; 15% deep-sequencing cut-off.

3 patients without post-treatment samples were excluded from analysis

# Results: Overall Safety

## ASTRAL-5 HIV/HCV Coinfection Study

Patients, n (%)	Total N=106
AE	75 (71)
Grade 3–4 AE	9 (8)
Serious AE	2 (2)
D/C due to AE	2 (2)
Death	0
Grade 3 or 4 laboratory abnormality*	19 (18)
HIV virologic rebound	0

\*8 out of 19 were elevated total bilirubin; all 8 were on atazanavir/ritonavir

- SAEs: Acute radial nerve palsy and left toe infection/sepsis/UTI, neither deemed related to study drug
- Most common laboratory abnormality was elevated bilirubin in patients receiving atazanavir/ritonavir



# Results: Adverse Events in $\geq 5\%$

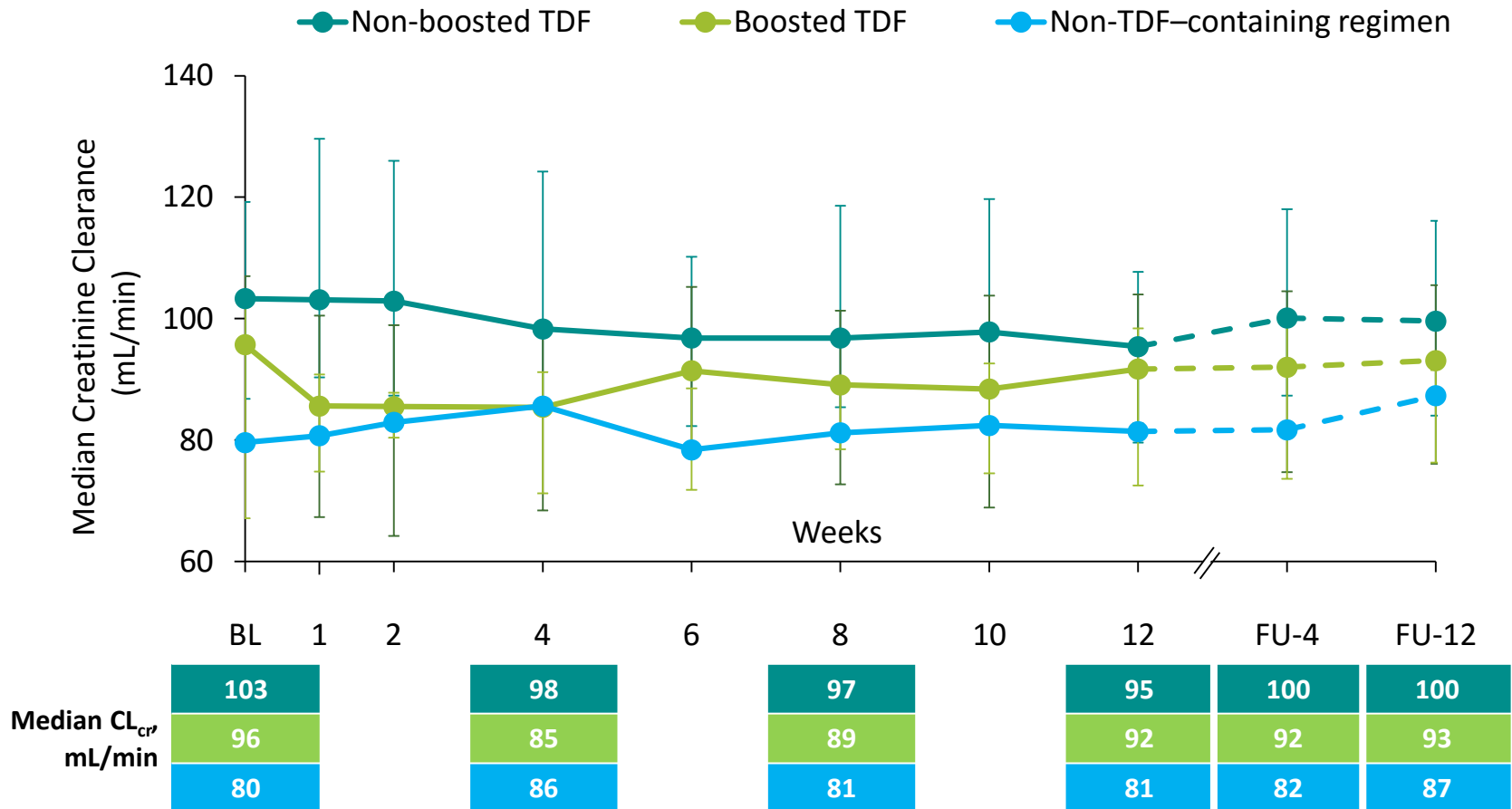
## ASTRAL-5 HIV/HCV Coinfection Study

Adverse event, n (%)	Total N=106
Fatigue	26 (25)
Headache	14 (13)
Arthralgia	9 (8)
Upper respiratory tract infection	9 (8)
Diarrhea	8 (8)
Insomnia	7 (7)
Nausea	7 (7)

- The majority of AEs were mild in severity (Grade 1 and 2)

# Results: Renal Function

## ASTRAL-5 HIV/HCV Coinfection Study



FU-4/12, follow-up Week 4/12; Creatinine Clearance calculated using the Cockcroft-Gault method; errors bars represent Q1, Q3.



# Conclusions

## ASTRAL-5 HIV/HCV Coinfection Study

- SOF/VEL treatment for 12 weeks resulted in 95% SVR12 rate in patients coinfecting with HIV and HCV GT 1, 2, 3, and 4
  - 100% SVR12 in patients with cirrhosis
  - 97% SVR12 in patients who failed prior HCV therapy
- Presence of baseline NS5A RAVs did not impact SVR12
- Treatment with SOF/VEL for 12 weeks was safe and well tolerated with ART, including TDF-based with boosted regimens
- SOF/VEL for 12 weeks provides a simple, safe, and highly effective treatment for patients coinfecting with HIV-1 and HCV



# Acknowledgments

**We extend our thanks to:**

**The patients and their families**

**All participating investigators**

Oluwatoyin Adeyemi  
Norbert Bräu  
Raymond T Chung  
Eric Daar  
Shyam Kottlilil  
Linda Law

Anne Luetkemeyer  
Velimir Luketic  
Susanna Naggie  
Jahnavi Naik  
Peter Ruane  
Michael Saag

Paul Sax  
Kenneth Sherman  
Mark Sulkowski  
Kimberly Workowski  
David Wyles

**This study was funded by Gilead Sciences, Inc.**